

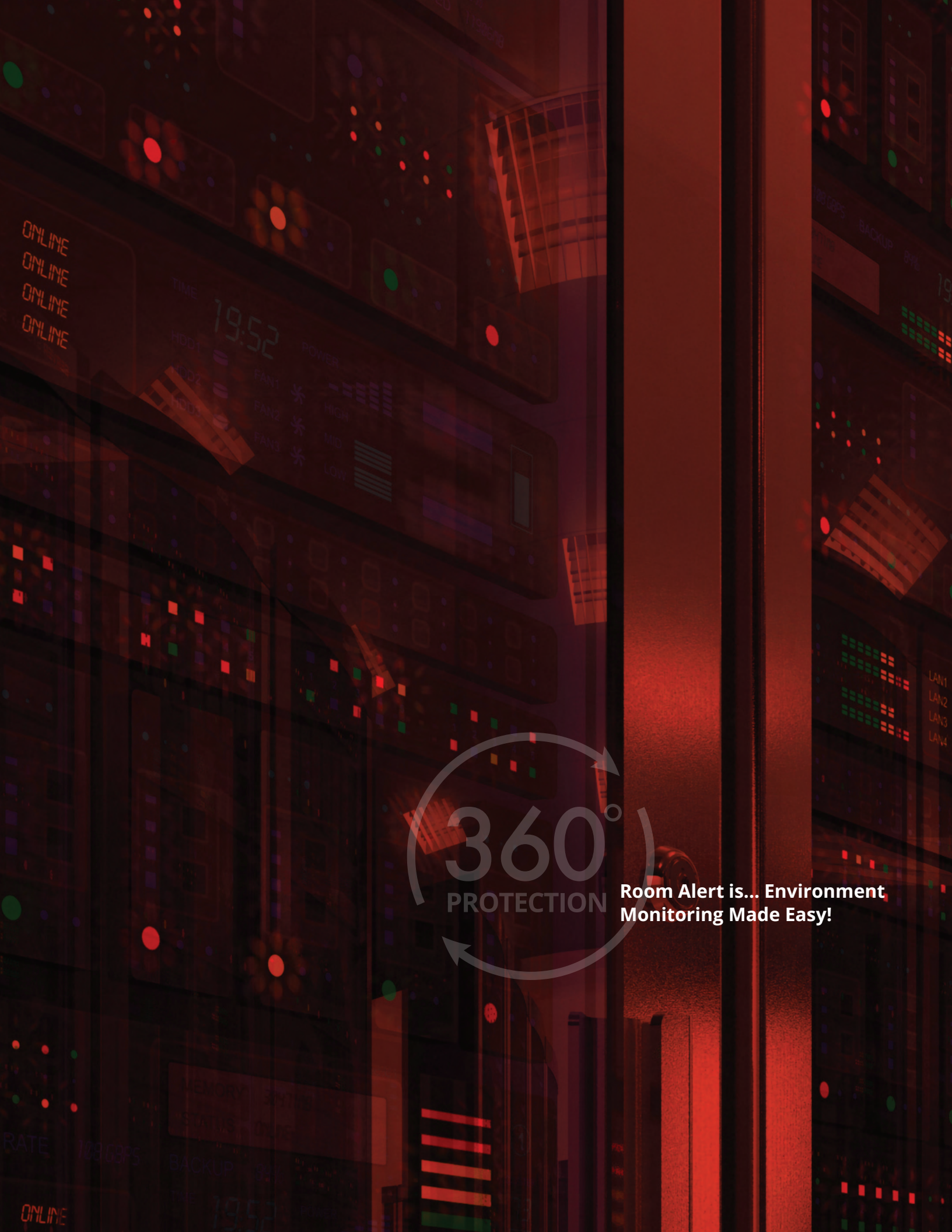
PRODUCT CATALOG

Spring 2025 - International



Room Alert Monitors Protect Your Facility Against ...

- High Heat
- Extreme Cold
- High Humidity
- Heat Index
- Flood / Water Leaks
- Power Loss
- Extreme Weather
- Smoke / Fire
- Unauthorized Entry
- Open / Closed Doors
- Airborne Particulate
- And More!



ONLINE
ONLINE
ONLINE
ONLINE

TIME
19:52

HDD1
HDD2
HDD3

FAN1
FAN2
FAN3

POWER
HIGH
MID
LOW

BACKUP
PHI
19

LAN1
LAN2
LAN3
LAN4



360°
PROTECTION

Room Alert is... Environment
Monitoring Made Easy!

RATE
12309F5

BACKUP

ONLINE

19:52



PANDORA



The World Leader in Proactive Environment Monitoring Since 1988.

Environment factors can cause major problems for your critical facilities and assets. Temperature, humidity, flood, power, smoke, and other environmental conditions can negatively affect data centers, warehouses, manufacturing, and facilities of all types. A slight change in temperature or humidity, or the introduction of water or smoke, can spell disaster for valuable equipment, property, people, or the business.

AVTECH has spent more than 35 years providing solutions that proactively monitor the environment and help warn of changes that might cause problems. Room Alert products are a critical part of your business continuity plan and are helping protect facilities in 187 of 196 countries, 98% of the Fortune 1000, the United Nations, Pentagon, FBI, and many thousands of other facilities worldwide. Use Room Alert to monitor, log, graph, map, alert, and respond. You can trust Room Alert to protect your important assets and facilities.

Built in the USA, Available Worldwide

Room Alert monitors, sensors and software are designed and supported from our headquarters in Warren, Rhode Island. All our products are manufactured in the United States in ISO 9001 certified facilities to ensure the highest quality. Users can monitor Room Alert using our online Room Alert Account dashboard, our local Room Alert Manager software, free Room Alert app, directly from Room Alert firmware, or any professional third-party SNMP monitoring platform.

Patented and Award Winning

Every Room Alert user has access to our patented Monitor360™ technology as part of our Room Alert Account portal. Take your environment monitoring and facility management to the next level by using Monitor360 to build virtual sensors and alerts that provide deeper insight into your facility. Room Alert users will not only know that they are receiving an alert, they will know exactly why conditions in their facility are in an alarm state, allowing them to respond quickly and more appropriately to minimize downtime and damage.

Room Alert is a secure, award-winning platform that is designed to be ready to protect your facility within minutes of installing it. Our countless online resources, product specialists and support team are here to assist with whatever monitoring needs you may have.

Room Alert protects people, property, and productivity to provide Peace of Mind.



Room Alert MAX **Powerful Environment Monitoring Made Easy**

Room Alert MAX makes protecting your facilities simple. Quick to install, easy to manage, and ready to work with your existing systems, Room Alert MAX turns complex monitoring into straightforward protection. Drawing on our almost 40 years of experience keeping customers safe, Room Alert MAX gives you powerful monitoring without the complexity.

Unparalleled Flexibility & Integration

Room Alert MAX works how you need it - as a standalone wireless system or alongside your existing Room Alert PRO monitors and sensors. Put Room Alert MAX where wireless makes sense, such as open offices, warehouses, or public areas, while keeping Room Alert PRO in your wired infrastructure spaces like server rooms or telecom closets. The Room Alert MAX Wired Sensor Adapter turns any existing Room Alert sensor into a wireless one, creating one unified system that protects your entire facility without wasting your previous investments.

Advanced Protection Made Easy

Room Alert MAX delivers powerful monitoring without the headaches. Built-in temperature sensors in each Room Alert MAX device start protecting immediately against the most common cause of environment-related outages, while the Room Alert MAX Temperature & Humidity Sensor helps keep your facility and staff safe by monitoring temperature, humidity, heat index, and dew point all from one compact sensor. Compatible with industry standards like SNMP and BACnet, Room Alert MAX fits right into your existing systems. Protect what matters with monitoring that adapts to your specific needs.



Room Alert MAX Base Station

The Room Alert MAX Base Station is the central hub of your MAX environment monitoring solution, designed to seamlessly integrate with our entire line of Room Alert PRO sensors and monitors. The MAX Base Station maintains effective communication with sensors from up to 100 feet away, making it ideal for comprehensive facility coverage and includes a built-in Temperature Sensor. With its sleek, compact design and versatile mounting options, it can be discreetly installed anywhere you need environmental monitoring.



- Features versatile connectivity with Ethernet 10/100 with Power over Ethernet (PoE) and Wi-Fi 2.4 GHz capability.
- Offers multiple power options via USB-C or PoE for flexible installation.
- Includes MAX Temperature & Humidity Sensor and comes with a 3-year warranty.

INCLUDES

Room Alert MAX Base Station, built-in Digital Temperature Sensor, external Room Alert MAX Temperature & Humidity Sensor, Factory Reset Button, Power Over Ethernet (PoE), PUSH technology, Ethernet Connection (RJ-45), 5V Power Adapter (110/240V, RoHS), built-in web server, SNMP Trap & Query enabled, Lifetime Support, Lifetime Firmware Updates, 3 year limited warranty from date of purchase.



Room Alert MAX Wired Sensor Adapter

The Room Alert MAX Wired Sensor Adapter (WSA) transforms your traditional wired Room Alert sensors into a wireless monitoring solution, extending your coverage without cable limitations. This compact adapter features a wireless range of up to 100 feet to the MAX Base Station and includes a built-in temperature sensor. Its small, lightweight design allows for flexible installation options while delivering powerful functionality for your environmental monitoring needs.



- Includes 2 digital sensor ports that support current Room Alert wired digital sensors.
- Features 1 switch sensor port for additional monitoring versatility.
- Compatible with the complete Room Alert sensor ecosystem.
- Comes with power adapter and 3-year warranty.



Room Alert MAX Temperature & Humidity Sensor

The Room Alert MAX Temperature & Humidity Sensor offers wireless monitoring with a 100-foot range to the MAX Base Station. It provides accurate temperature readings (-40°C to 125°C, ±0.2°C) and humidity measurements (0-100% RH, ±1.8%), while also monitoring heat index and dew point. This compact sensor features 2+ year battery life on standard AA batteries with optional USB-C power.



- Wireless design with 100-foot range to the MAX Base Station.
- Monitors temperature, humidity, heat index, and dew point.
- Multiple mounting options for versatile installation.
- Includes 1-year warranty.



Room Alert PRO

Secure Proactive Environment Monitoring

Room Alert PRO delivers reliable protection through proven wired technology. Built for your most critical environments, Room Alert PRO provides the security and stability you need where consistent monitoring is non-negotiable. Trusted by thousands of organizations worldwide, Room Alert PRO gives you powerful monitoring with absolute confidence.

Uncompromising Reliability & Security

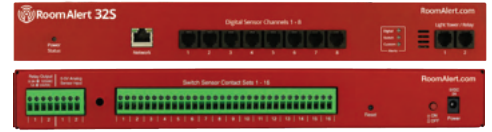
Room Alert PRO thrives in demanding environments where reliability matters most. With enterprise-grade security and consistent performance, Room Alert PRO keeps your critical infrastructure protected around the clock without compromise.

Trusted Performance When It Matters

The Room Alert PRO platform prevents costly downtime when every minute counts, and delivers the dependability that mission-critical operations require. As your facility grows, Room Alert PRO grows with you by adapting to new challenges while maintaining the performance your business depends on. Choose protection that has stood the test of time and continues to safeguard what matters most with Room Alert PRO.

Beyond Monitoring: A Complete Solution

Room Alert PRO isn't just about detecting problems... it's about preventing them. With comprehensive historical data logging, reporting capabilities, and customizable alerts, you gain insights that help optimize your environment for peak performance. When security and reliability are essential, Room Alert PRO delivers the protection you need with the certainty you deserve.



Room Alert 32S



Starts at \$CALL

RA32S-DAP-RAS

The Room Alert 32S is our flagship PRO model and monitors temperature, humidity, heat index, dew point and power right out of the box. It also includes a built-in Mini UPS in the event of power loss. Security features include SNMP v1/v2c/v3, HTTPS, 2048-bit encryption and more. With the capacity to monitor 32+ sensors, the Room Alert 32S can handle any facility's environmental needs.

The Room Alert 32S is available in four different package configurations to help you get the most out of your proactive environment monitoring. Each package is designed to maximize monitoring capabilities based on the type and size of your facility, and will help you monitor the most critical factors that could cause downtime and damage to your organization. Save money and maximize your investment with Room Alert bundle packages!



\$CALL

RA32S-RPD-RAS



\$CALL

RA32S-GRD-RAS



\$CALL

RA32S-ESS-RAS



\$CALL

RA32S-DAP-RAS

INCLUDES

Room Alert 32S monitor (1U 19"), built-in Digital Temperature, Humidity, Dew Point, Heat Index, and Power Sensors, 8 Digital Sensor Ports (RJ-11), 16 Switch Sensor Channels, Power On/Off Button, Factory Reset Button, Power Over Ethernet (PoE), built-in Uninterruptible Power Supply (UPS), rotating mounting wings, PUSH technology, Ethernet Connection (RJ-45), 2 Light Tower & Relay Adapter Ports, 2 Relay Output Ports (0.3A@125VAC / 1A@24VDC), 2 Analog Sensor Input Ports (0-5V), 10' Ethernet cable, 5V Power Adapter (110/240V, RoHS), built-in web server, SNMP v1/v2c/v3, HTTPS, 2048-bit encryption, SNMP Trap & Query enabled, SNMP MIB, Lifetime Support, Lifetime Firmware Updates, 3 year limited warranty from date of purchase.





Room Alert 12SR

PoE **RoHS** **FC** **CE**
Starts at \$CALL

RA12S-DAP-RAS

The Room Alert 12SR is our midrange PRO monitor offering security features that include SNMP v1/v2c/v3, HTTPS, 2048-bit encryption and more. It monitors temperature and has capacity for 12+ sensors, and also offers additional dedicated ports to toggle electrical devices on/off. Available in wall mount (Room Alert 12S) or rack mount (Room Alert 12SR) versions, this is the perfect monitor for mid-sized spaces.

The Room Alert 12SR is available in four different package configurations to help you get the most out of your proactive environment monitoring. Each package is designed to maximize monitoring capabilities based on the type and size of your facility, and will help you monitor the most critical factors that could cause downtime and damage to your organization. Save money and maximize your investment with Room Alert bundle packages!



\$CALL
 RA12S-RPD-RAS

\$CALL
 RA12S-GRD-RAS



\$CALL
 RA12S-ESS-RAS

\$CALL
 RA12S-DAP-RAS

INCLUDES

Room Alert 12SR monitor, built-in Digital Temperature Sensor, 3 Digital Sensor Ports (RJ-11), 4 Switch Sensor Channels, Factory Reset Button, Power Over Ethernet (PoE), PUSH technology, Ethernet Connection (RJ-45), Light Tower & Relay Adapter Port, Relay Output Port (0.3A@125VAC / 1A@24VDC), Analog Sensor Input Port (0-5V), 10' Ethernet cable, 5V Power Adapter (110/240V, RoHS), built-in web server, SNMP v1/v2c/v3, HTTPS, 2048-bit encryption, SNMP Trap & Query enabled, SNMP MIB, Lifetime Support, Lifetime Firmware Updates, 3 year limited warranty from date of purchase.



Room Alert Data Center Monitor



\$CALL
RA32S-DCM-RAS



Safeguard your critical data center infrastructure from environmental threats by continuously monitoring temperature, humidity, power, water leaks, and other vital factors. With easy installation, user-friendly interfaces, and customizable alerts, the Data Center Monitor ensures compliance with industry standards and provides peace of mind for your organization.

Includes Room Alert 32S monitor, Digital Temperature & Humidity Sensor (25'), Digital Active Power Sensor w/Temperature (10'), Digital Temperature & Air Flow, Digital Particulate & Temperature, Flood Sensor w/8' Cable, Power Sensor, and Room Entry Sensor, all at a discounted price.

Room Alert Server Room Monitor



\$CALL
RA12S-SRM-RAS



Protect your server room against environmental risks with 24/7 monitoring of temperature, humidity, power fluctuations, water leaks, and other critical parameters. The Data Center Monitor features simple setup, intuitive controls, and personalized notification options, helping your organization maintain industry compliance standards while delivering operational confidence.

Includes Room Alert 12S monitor, Digital Temperature & Humidity Sensor (25'), Digital Temperature & Air Flow, Digital Particulate & Temperature, Flood Sensor w/8' Cable, Power Sensor, and Room Entry Sensor, all for a discounted bundle price.

Room Alert Indoor Air Quality Monitor



\$CALL
RA12S-IAQ-RAS



Help safeguard the people in your facilities from harmful airborne particulate matter with the Indoor Air Quality Monitor. This special bundle offers a Room Alert 12SR monitor along with multiple sensors to help monitor the particulate levels (both PM10 and PM2.5) and air quality in your facility. Get immediate alerts if conditions reach a level that could be harmful for your staff.

Includes Room Alert 12SR monitor, Digital Temperature & Air Flow Sensor, Digital Particulate & Temperature Sensor and a Digital Temperature & Humidity Sensor

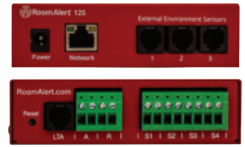
Room Alert Heat Safety Monitor



\$CALL
RA3S-HSM-BAS



Don't risk your workforce's health or regulatory penalties when our Heat Safety Monitor bundle can keep you covered. This specialized package combines the powerful Room Alert 3S with a 25' Digital Temperature & Humidity Sensor, delivering comprehensive monitoring of temperature, humidity, heat index, and dew point simultaneously. Receive instant notifications when environmental conditions approach harmful thresholds, preventing heat-related incidents before they impact your team's wellbeing.



Room Alert 12S

The Room Alert 12S is our midrange PRO monitor offering security features that include SNMP v1/v2c/v3, HTTPS, 2048-bit encryption & more. It monitors temperature and has capacity for 12+ sensors, and also offers additional dedicated ports to toggle electrical devices on/off. This is the perfect monitor for mid-sized spaces. Need your device rack mounted for your server rack? Consider the Room Alert 12SR.



\$CALL

RA12E-TH1-WAS



- Monitor via online Room Alert Account dashboard, included Room Alert Manager software, or any professional third-party SNMP platform.
- Provides 3 digital ports, 4 switch sensor ports, 1 analog sensor port, 1 relay output port, and 1 Light Tower & Relay adaptor port.
- Integrate the device into your preferred SNMP program over SNMP v3. (SNMP v1 traps and SNMP v2c also available).

INCLUDES

Room Alert 12S monitor, built-in Digital Temperature Sensor, external 25' Digital Temperature & Humidity Sensor, 3 Digital Sensor Ports (RJ-11), 4 Switch Sensor Channels, Factory Reset Button, Power Over Ethernet (PoE), PUSH technology, Ethernet Connection (RJ-45), Light Tower & Relay Adapter Port, Relay Output Port (0.3A@125VAC / 1A@24VDC), Analog Sensor Input Port (0-5V), 10' Ethernet cable, 5V Power Adapter (110/240V, RoHS), built-in web server, SNMP Trap & Query enabled, SNMP MIB, Lifetime Support, Lifetime Firmware Updates, 3 year limited warranty from date of purchase.



Room Alert 3S

The Room Alert 3S is our most economical monitor with the smallest footprint that offers advanced security features such as SNMP v1/v2c/v3, HTTPS, 2048-bit encryption and more. With built-in temperature monitoring and two additional sensor ports, this is the perfect monitor for telecom closets, small rooms, remote locations, or any other place where space is minimal or at a premium.



\$CALL

RA3S-ES0-BAS



- Monitor via online Room Alert Account dashboard, included Room Alert Manager software, or any professional third-party SNMP platform.
- Push data to the Room Alert Account online dashboard over HTTPS, and send alert notifications directly from the device over your TLS email server.
- Integrate the device into your preferred SNMP program over SNMP v3. (SNMP v1 traps and SNMP v2c also available).

INCLUDES

Room Alert 3S ID Box (0U, 3-5/8" L x 1-3/4" W x 1" H), built-in Digital Temperature Sensor, 1 external Digital Sensor Port (RJ-11), 1 Switch Sensor Channel, Factory Reset Button, Power over Ethernet (PoE), PUSH technology, Ethernet Connection (RJ-45), 10' Ethernet cable, 5V Power Adapter (110/240V, RoHS), built-in web server, SNMP v1/v2c/v3, HTTPS, 2048-bit encryption, SNMP Trap & Query enabled, SNMP MIB, Lifetime Support, Lifetime Firmware Updates, 3 year limited warranty from date of purchase.



Room Alert Mobile App Stay Informed - Anywhere, Anytime

The Room Alert app makes it easier and more convenient than ever to monitor your environment from any mobile device. The Room Alert app is free to download on Android and Apple app stores and is available for users worldwide.

Simply log in with the same credentials used for logging into your Room Alert Account. For customers on Enterprise service or higher, use SAML/SSO to sign in. Your view in the app will mirror your online Room Alert Account service and pull the same information, ensuring a seamless and user-friendly experience consistent with the Room Alert Account web interface. Here, you have the ability to:

- View up-to-date and accurate sensor readings across all of your Room Alert hardware
- View configured alerts
- View alert details
- View a comprehensive list of your alert history
- Acknowledge and respond to alerts and coordinate in real-time with other team members

Our mobile-first mindset rounds out the Room Alert ecosystem to offer consistency in the look and functionality of Room Alert, whether you are using the mobile app, Room Alert Account in your web browser, Room Alert Manager software locally on your network, or the built-in web interface on every Room Alert monitor.



Room Alert Account with Monitor360

Room Alert Account Facility Insight Like Never Before

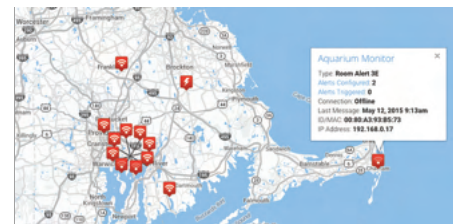
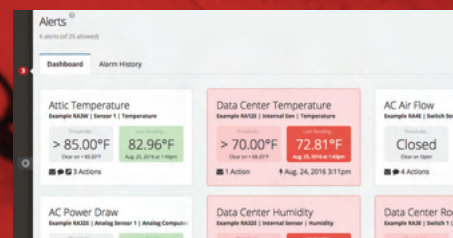
Room Alert takes environmental monitoring to new levels with patented Monitor360 technology available only in our Room Alert Account online dashboard. Other monitors can tell you what is happening... Room Alert Account and Monitor360 help tell you *why*.

Take Advantage of Virtual Sensors and Alerts

Monitor360 technology allows Room Alert users to create virtual sensors and alerts using existing monitors and sensors in multiple combinations to provide you with customized alerts across multiple sensors, monitors, and even locations.

Take Immediate Action To Prevent Downtime

The online Room Alert Account dashboard, available to all users, provides you with unparalleled insight into the conditions of your facilities to keep you protected. Get immediate alerts through all modern methods, including push notifications via our free Room Alert app, to keep your people, property, and productivity protected at all times.



Alert Name	Alert Type	Alert Value	Current Value	Status	Actions
Attic Temperature	Temperature	> 85.00°F	82.96°F	OK	3 Actions
Data Center Temperature	Temperature	> 70.00°F	72.81°F	Alert	1 Action
AC Air Flow	AC Air Flow	Closed	Closed	Alert	4 Actions
AC Power Draw	AC Power Draw	-	-	OK	-
Data Center Humidity	Humidity	-	-	OK	-
Data Center Room	Room	-	-	OK	-

Room Alert Manager Unlimited Local Monitoring

Users who prefer a local software management platform can use our Room Alert Manager software for unlimited management, monitoring, alerting, logging, reporting, graphing and more.

Feature Rich Software

Room Alert Manager provides a wealth of options for Room Alert users, including:

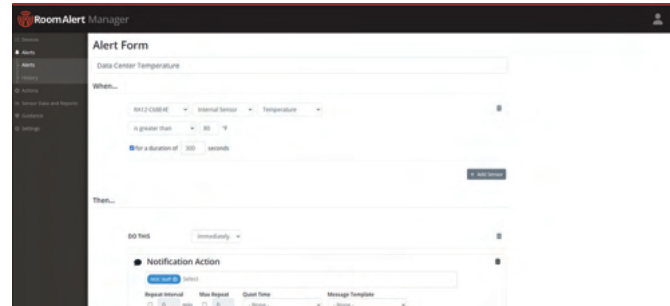
- User-friendly interface
- Multiple threshold alerts
- Customized alert durations
- Firmware updates across the network
- Hardware groupings for easier management
- User hierarchies, scheduling, mapping
- Server shutdown actions
- And so much more!

Manage Devices Across Multiple Locations

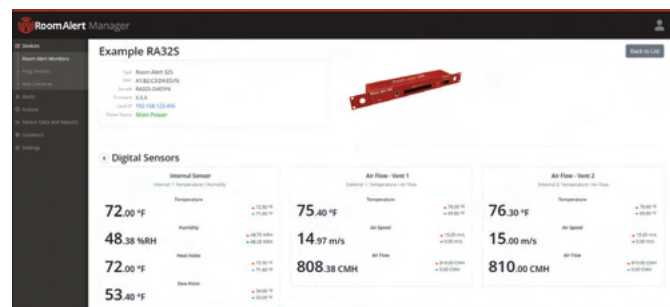
Room Alert Manager is the optimal choice for users in industries that require local software management solutions. Users can monitor and manage Room Alert installations in multiple locations with one central platform, or combine Room Alert Manager with our online Room Alert Account dashboard and free Room Alert mobile app for the ultimate in facility environmental monitoring coverage.

"Within the first two weeks of installing our first Room Alert, we were able to identify and subsequently replace a failing A/C unit before the network gear overheated and failed; all thanks to automated email notifications. With as reliable and sturdy as these devices have been, we plan to implement many more throughout the facility!"

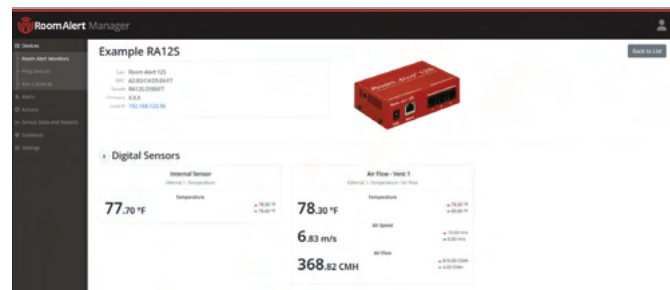
Rob D., Sr Network Administrator



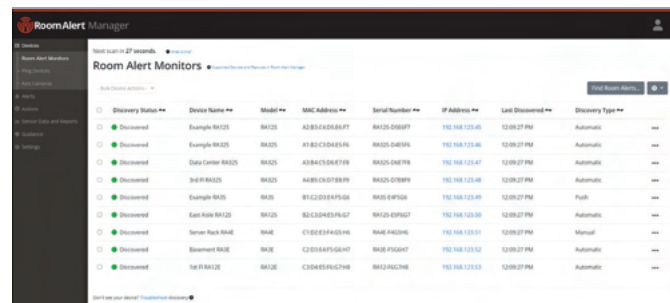
Create Customised Alerts



View Sensor & Monitor Status On One Screen



Manage Alerts, Reports, Historical Data and More



Easily Deploy and Manage Multiple Room Alert Monitors



Temperature and Environment Sensors

Room Alert Sensors Unlimited Expansion Capability

Every customer and situation will have their own unique monitoring needs based on their type of facility, location, and so much more. Room Alert sensors are designed to be used in nearly any combination and situation to provide maximum monitoring coverage.

Choose From Multiple Types Of Sensors

Every Room Alert monitor accepts multiple types of sensors so users can choose the exact sensors their situation calls for. All our sensors are designed for low cost and reliability. Room Alert sensors are fully supported by Room Alert hardware and software.

Customize Solutions For Your Exact Needs

Protect your people, property, and productivity by adding the specific sensors you need for your own situation to build the perfect monitoring solution for you and your organization.

We Offer a Wide Range of Sensors to Meet Every Need.

- Digital Temperature
- Digital Temp & Humidity
- Heat Index (Feels Like)
- Dew Point
- Air Flow
- Particulate
- Main / UPS Power
- Power Current (Amps)
- Active Power & Temperature
- Flood / Water (Cable)
- Flood / Water (Spot)
- Smoke / Fire
- Motion
- Room / Door Entry
- Analog Sensors
- Relay Switches
- Network Cameras
- Light Towers & More



TMP-SDT-SEN (25')
TMP-DT50-SEN (50')
TMP-DT100-SEN (100')

Digital Temperature Sensor

Monitor indoor temperatures across an exceptional range. This dedicated sensor delivers reliable readings for temperature-sensitive environments where humidity isn't a concern.

- Wide range: Measures -67 to 257°F (-55 to 125°C), ideal for everything from server rooms to manufacturing floors.
- Flexible installation: Available with 25', 50', or 100' cables. Visit AVTECH.com for more information.



RMA-DTH-SEN (25')
RMA-DTH50-SEN (50')
RMA-DTH100-SEN (100')

**BEST
SELLER**

Digital Temperature & Humidity Sensor

Measure multiple environmental factors at once, providing a complete picture of conditions that could affect people and equipment.

- Comprehensive monitoring: Tracks temperature (-40 to 185°F / -40 to 85°C), humidity (5-95%), dew point, and heat index in real-time.
- Flexible installation: Available with cable lengths up to 100'. Visit AVTECH.com for more information.



TMP-DOT-SEN (25')
TMP-DOT50-SEN (50')
TMP-DOT100-SEN (100')

Digital Outdoor Temperature Sensor

Monitor temperatures in harsh environments with confidence. This rugged sensor features silicon coating protection for reliable performance outdoors or in conditions like freezers or refrigerators.

- Extreme temperature capability: Accurately measures from -67 to 257°F (-55 to 125°C), ideal for monitoring across varying conditions.
- Enhanced durability: Special silicon coating provides superior protection against moisture, humidity, and environmental stressors for long-term reliability.



RMA-DAP-SEN
RMA-DAP25-SEN
RMA-DAP50-SEN
RMA-DAP100-SEN

PATENTED

Digital Active Power w/Temperature Sensor

Monitor power status without electrical modifications. This dual-function sensor clips directly onto power cables, tracking both power and environmental conditions simultaneously.

- Comprehensive monitoring: Measures active power (100-1800W) with no cutting or tools required, plus temperature (-40 to 185°F / -40 to 85°C).
- Flexible installation: Available with cable lengths up to 100' and compatible with all Room Alert monitoring systems.



RMA-DTAF-SEN

NEW

Digital Temperature & Air Flow Sensor

Detect HVAC issues before they become problems. This specialized sensor monitors both air movement and temperature in ducts and vents, providing early warning of ventilation failures or inefficiencies.

- Dual monitoring: Measures air flow (0-2952.76 f/m with ±5% accuracy) & temperature (-40 to 185°F/-40 to 85°C) simultaneously.
- Versatile placement: Easily attaches to vents, HVAC ducts, fans, and other air circulation systems for strategic monitoring points.



RMA-DTP-SEN

NEW

Digital Particulate & Temperature Sensor

Safeguard air quality with precision particulate monitoring. Detect harmful particles while simultaneously tracking temperature, ideal for environments where air quality impacts health and safety.

- Fine particle detection: Monitors both PM2.5 (±5% accuracy) and PM10 (±25% accuracy) particulate up to 1,000 µg/m³.
- Wide temperature range: Accurately measures from -40 to 257°F (-40 to 125°C).



RMA-DTHS-SEN (25')
RMA-DTHS50-SEN (50')
RMA-DTHS85-SEN (85')

Digital Shielded Temp & Humidity Sensor

Measure multiple environmental factors at once, providing a complete picture of conditions that could affect people and equipment. Ideal for environments with high electrical noise or EMI.

- Comprehensive monitoring: Tracks temperature (-40 to 185°F / -40 to 85°C), humidity (5-95%), dew point, and heat index in real-time.
- Flexible installation: Available with cable lengths up to 85'. Visit AVTECH.com for more information.



RMA-PS1-SEN

Main Power Sensor

Prevent costly downtime with instant power status monitoring. This sensor immediately detects power failures or state changes, providing critical alerts before backup systems fail or equipment is damaged.

- Versatile power monitoring: Tracks status for main power, UPS, single-phase systems, or backup generators.
- Extended reach: Allows for strategic placement with cable reach up to 900', making it ideal for larger deployments.



RMA-F008-SEN (8')
RMA-F024-SEN (24')



Flood Sensor w/ Cable

Protect critical assets from water damage with rapid leak detection. This specialized sensor detects water anywhere along its patented cable, providing immediate alerts before costly damage occurs.

- Continuous monitoring: Detects water across the entire cable length (8' or 24' options).
- Extended reach: Supports distances up to 900' with included 25' leader cable, allowing strategic placement in vulnerable areas.



RMA-FS2-SEN

Flood Sensor (Spot)

Instant water detection for targeted protection. This compact sensor provides rapid alerts when water is present, ideal for pinpointing leaks and preventing localized water damage.

- Rapid Response: Triggers immediate alerts upon contact with water, ensuring quick action to mitigate potential damage.
- Flexible Placement: Extends up to 900' with a 25' included cable, enabling positioning in vulnerable spots like basements.



RMA-DET-SEN

Digital Extreme Temperature Sensor

This sensor delivers precise, real-time temperature monitoring for critical environments with extreme conditions such as cold storage, ensuring product integrity and operational safety.

- Ultra-Wide Range: Measures temperatures from -328°F to 932°F (-200°C to 500°C), ideal for the most demanding applications.
- Durable Construction: Features a robust stainless steel sensor tip and 40" steel lead wires, with a maximum sensor cable distance of 100' (includes 25').



RMA-MUPS-SEN

Mini UPS & Power Sensor

Reliable power monitoring and backup in a compact design. This sensor provides real-time power status and ensures critical devices stay online during outages with integrated battery backup.

- Continuous Power Oversight: Monitors main, UPS, or single-phase power, providing instant alerts for power status changes.
- Integrated Battery Backup: Supplies 15+ minutes of backup power for any 5V device, with a maximum sensor cable distance of 900' (includes 25').



TMP-DFT-SEN (25')
TMP-DFT50-SEN (50')
TMP-DFT100-SEN (100')

Digital Fluid Temperature Sensor

Consistent temperature monitoring in demanding cold storage. This sensor's enclosed tip ensures stable readings, preventing false alerts from door openings and maintaining critical temperature integrity.

- **Accurate Readings:** Measures temperatures from -67°F to 257°F (-55°C to 125°C), ideal for food, medicine, and other monitoring.
- **Flexible Cable Options:** Available in multiple lengths, with a maximum cable distance of 100' for tailored placement.



IBO-IO-REL

iBoot IO

Automate critical responses to environmental changes. This intelligent power switch enables remote control of devices, triggering actions based on real-time Room Alert sensor data.

- **Automated Device Control:** Toggle external devices on/off based on alerts, such as activating cooling systems during heat spikes or pumps during leaks.
- **Reliable and Safe:** Features a UL Listed Power Switch and supports cable distances up to 330' (includes 25') for flexible placement.



RMA-RLAD-SEN

Relay Switch Sensor (Low Voltage)

Automate low-voltage device control with precision and flexibility. This sensor enables remote or automated on/off switching of devices, triggered by network commands or Room Alert environmental alerts.

- **Versatile Relay Control:** Features four independent relays with visible status lights, supporting 0.3A at 125VAC or 1A at 24VDC.
- **Broad Compatibility:** Integrates with various Room Alert devices; visit our website for more information.



RMA-CL1-SEN (0-50A)
RMA-CL2-SEN (0-250A)

Current Loop

Precise real-time monitoring of single-phase power consumption. This sensor provides accurate current readings, enabling proactive management and optimization of power usage.

- **Versatile Monitoring:** Available in two models: Current Loop 1 (0-10A, 0-20A, 0-50A) and Current Loop 2 (0-100A, 0-200A, 0-250A) to suit various power requirements.
- **Simple Integration:** Connects seamlessly via Room Alert Analog Sensor Port or Digital Temperature & Analog Sensor.



IBO-G2S-SWI

REMOTE
ACCESS

iBoot G2S

Instant remote reboot for critical devices, anywhere. This intelligent power switch enables rapid recovery of unresponsive equipment, minimizing downtime and maximizing uptime.

- **Remote Power Cycling:** Provides immediate reboot capabilities for any device, ideal for remote or hard-to-reach locations.
- **Automated Heartbeat Reboot:** Features automatic reboot functionality if a network device fails to respond to pings, with a maximum cable distance of 330' (includes 25').



**Scan here to visit RoomAlert.com
for a full lineup of available sensors
and accessories.**



AVTECH... The Company You Can Count On

Every data center, server room, warehouse, cold storage, laboratory, classroom, or other type of critical facility needs to be protected against outages and potential data/asset loss resulting from environment factors.

Your organization has a number of options available to you for environment monitoring through various methods and devices. We firmly believe that AVTECH's Room Alert offers all of the qualities, options, and features required to help keep you protected in a single and complete platform. Users in over 185 countries have made the choice to rely on Room Alert for their proactive environment monitoring since 1988.

We're very proud of everything we've accomplished over the last 35+ years. Many of those accomplishments are due to the relationships we've built with our users over the years, and the helpful feedback they've provided to us. Looking forward to our next 35 years has the entire AVTECH team excited about the ways we'll be able to help users across the world expand their data center, IT, and facilities environment monitoring.



"We have Room Alert at each of our 5 locations and we get alerts when the power goes out or if the air conditioning turns off and it gets too hot, helping prevent server crashes. Room Alert has saved us more than once. We love these units!"

Darlene H, Senior Support Analyst



How To Purchase

AVTECH products are available for purchase around the world and used in 187 of 196 countries. You can purchase through your favorite reseller, direct from AVTECH, or online. When ordering from AVTECH, we are happy to accept your organization's purchase order (PO), as well as payment via credit card or wire transfer. Most orders ship the same or next business day.

Resellers: Available Worldwide

Ask your favorite Reseller to contact AVTECH on your behalf. AVTECH has an established and professional network of Resellers world-wide and can recommend a local Reseller. Resellers may have local stock & can coordinate import to reduce costs.

Phone: 888.220.6700 / 401.628.1600 (9-5 EST)

Call AVTECH direct and ask to speak with a Product Specialist. They can answer questions and take your order by phone for immediate processing or provide you with an immediate PDF quote with payment link by email. If you are outside of the U.S.A. or Canada, please ask to speak with an International Product Specialist as they can address international concerns.

Online: AVTECH.com or RoomAlert.com

Place your order online for immediate processing. We can accept payment in both U.S. Dollars (USD) and Euros (EUR).

Email: Orders@RoomAlert.com

Send your organization's purchase order (PO), completed and scanned quote form or order instructions to AVTECH via email. We only accept POs in PDF format.



Follow us for tips and insights on protecting your environment.



Contact Us

AVTECH Software, Inc.
16 Cutler Street, Cutler Mill
Warren, RI 02885-2761 USA
Sales: 888.220.6700
Phone: 401.628.1600
Fax: 401.628.1601

Visit Us Online

AVTECH.com
RoomAlert.com

Most Orders Ship the Same or Next Business Day. Import Duties and Taxes are the Responsibility of Recipient.

Trademarks

© Copyright 1988-2025
AVTECH Software, Inc.
All Rights Reserved Worldwide.
AVTECH, AVTECH Software
AVTECH.com, AVTECHSoftware.com,
'Environment Monitoring Made Easy!'
'Protect Your Facility... Don't Wait Until It's Too Late!'
Room Alert, RoomAlert.com,
Monitor360, Room Alert Account, & Room Alert Manager.

Privacy Promise

AVTECH does not sell or share your email or other contact information, however, AVTECH uses some email marketing because our prospects and customers consider it important and convenient. When we do, AVTECH provides customers with an easy means to decline further email of that type.

Current Versions

To confirm your organization is running current software and firmware versions or to download these versions for any licensed AVTECH product, log in at RoomAlert.com and use your non-expiring account to look for the 'Current Versions' box on the 'Downloads' page, then update your Room Alert monitor firmware for free.

Why Room Alert?

Trusted

With over a million users located in over 185 countries, our reliability and performance are highly valued, worldwide.

Easy

"Plug and play," "Set it and forget it." By any metric, in every environment, we're up and running for you on Day One.

Expert

Decades of experience have resulted in a platform and products that set the standard for superior quality.

Protecting

We're actively dedicated to maintaining business continuity in hundreds of industries in any and all of its forms.

Caring

Your satisfaction is our success, and we're here - in person - to ensure it. You can count on Room Alert!



Room Alert is a secure, award-winning platform that is designed to be ready to protect your facility within minutes of installation. Our countless online resources, product specialists and support team are here to assist with whatever monitoring needs you might have.



US Headquarters

16 Cutler Street, Cutler Mill
Warren, RI 02885-2761 USA

International Distribution

AVTECH Software Ltd.
Shannon Free Zone,
Shannon, Co. Clare, V14YR71

888.220.6700 / 401.628.1600
AVTECH.com / RoomAlert.com